

COLLECTION OF
PORCELAIN TILES

CREATIVELY
I N N O V A T E



EVOLUTION

CEO MESSAGE



Since our establishment in 1994, we have become the one of the fastest growing porcelain tile company in the India. Driven by passion and hard work, we help our clients build stronger, more agile and innovative businesses.

Rather than dwell on our past achievements, we look forward to the enormous opportunities that are emerging from the growing shift to digital technology in the ceramic world.

We invest in new creative designs and acquisitions, build our capabilities, and develop our teams to ensure that EVOLUTION is well positioned to help clients explore the vast opportunity and deliver on the potential of this new digital business era.

EVOLUTION enables global enterprises to optimize their operations, manage their cost and invest in innovation that unleashes new potential across their organizations.

What makes us unique is our ability to conceptualize, architect and implement new and expanded capabilities that allow our clients to transform legacy designs to take their business to the next level.

As an organization built on world-class operations, EVOLUTION brings innovation technology to the market with the most complete value proposition in the industry. We simplify the complexities of the ceramic industry, but also their business challenges.

Looking forward to be working with you,

Mr. Atul Kundariya
Chief Executive Officer





evolutionary
designed
porcelain tiles



Who we are

In order to be distinctive and the best at what they do, the company uses state of the art technology without any compromises in the finesse and quality of the products.

Using high-end machinery imported from Italy contributes to the Company's success in being one of the best floor tiles and wall tiles manufacturers in the country today.

At the House of evolution Ceramic Tile, product, design and innovation are at the heart of everything we do, and our driven team of creative designers and technicians translate current trends and technological advances into commercial and production efficient tile ranges.

The House of Art, evolution unique and extensive product range covers ceramic, porcelain, glass and natural stone tiles, and we offer diverse range options across wall, floor and multi-user solutions. evolution is a business to business organisation, and our products are supplied via leading retailers and distributors. We are committed to providing all of our retail and distribution partners with a market leading customer service across worldwide.



EVOLUTION IN THE COURSE OF TIME

1994	Fine Ceramic Pvt. Ltd.	2004	Antique Granito Pvt. Ltd.	2010	Antique Marbonite Pvt. Ltd.	2011	Antique Marbonite Pvt. Ltd. (Quartz Plant)	2013	Shivam Enterprise	2014	Antiqua Ceramic Pvt. Ltd.	2018	Antiqua Mineral Pvt. Ltd.	2019	Shivam Surface(I) LLP. (Quartz Plant)	2020	Shivam Enterprise(USA) INC.	2020	Shivam Multi Micron LLP.
1998	Shine Ceramic Pvt. Ltd.	2007	Antique Mineral Pvt. Ltd.	2011	Antique Non Woven Pvt. Ltd.	2012	Antique Power Pvt. Ltd.	2013	Antique Texttile Pvt. Ltd.	2017	Mineral World LLP.	2018	Evolution Ceramic	2020	Antique Pharma LLP.	2020	Antiek Vitrified LLP. (Evolution)	2020	Shivam Enterprise(UK) INC.

We started back in 1994 and since then, Evolution Tiles has emerged as one of the top flooring companies in India. You'll see it in the vibrant colors of your office entryway, the durable aisles underfoot at the grocery stores, and the warm, inviting, beautiful kitchen floor that has designed for countless family celebrations. That's us, *Evolution Tiles*.



EVOLUTION EXPERTISE

Exterior

Interior

Kitchen

Bathroom

Kidsway

Business



fresh ideas.
creative designs.
evolutionary results.



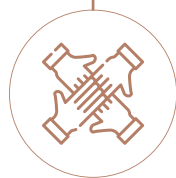
EVOLUTION

CORE VALUES

think digital
think evolution



INNOVATION



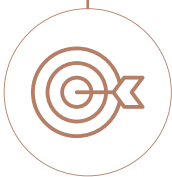
TEAMWORK



INTEGRITY



RESPONSIBILITY



GOALS



COMMITMENT



CUSTOMERS



EVOLUTION

MISSION VISION

Our Mission

Our mission is to provide the best fully tested products and solutions for our customers.

Our Vision

We keep developing and using cutting edge technologies and work procedures.

Our Values

Integrity:

Integrity is the core value that guides all our actions and decisions

Customer Experience:

We strive to deliver excellence to our customers in every step

Teamwork:

We value each member of our team and believe that only with dedication and team spirit can we beat any challenges

Innovation:

Innovation is the cornerstone on which we build our success and future moves



EVOLUTION WHY US...



the process
of infinite
creativity

Distinguished References

Our outstanding record in ceramic industry to the customer needs in all the industries we work with, innovative with years of experience and extensive know-how, allows us to offer, not just products or services, but customized comprehensive designs that suites your companys current and future needs.

Fostering Relationships

We understand that business relations are the foundation of success, and thats why our priority is to build strong lasting relations with our customers, and our partners. We see our clients business as ours, and we work continuously on bettering and fostering global partnerships, to be able to provide the optimum know-how and support to our customers.

Know-How

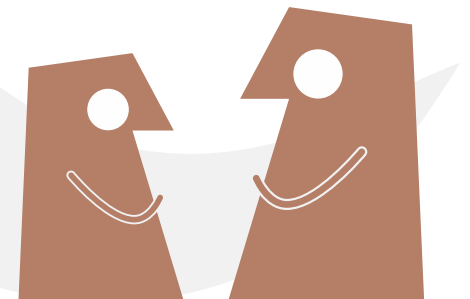
Our people are our strongest asset. Over the years we have built a team of experienced, highly qualified, and regionally recognized creative and technical staff, that provides 24/7 support to our customers.

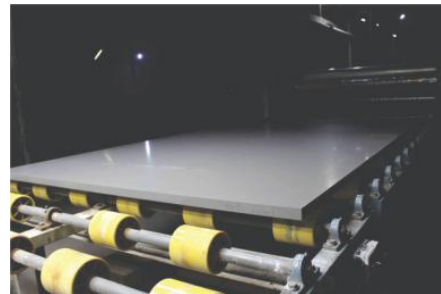
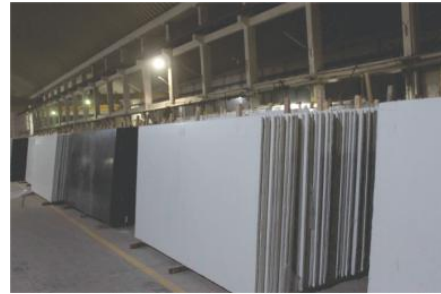


EVOLUTION

QUALITY MANAGEMENT

we believe in
one mantra that is
quality
management



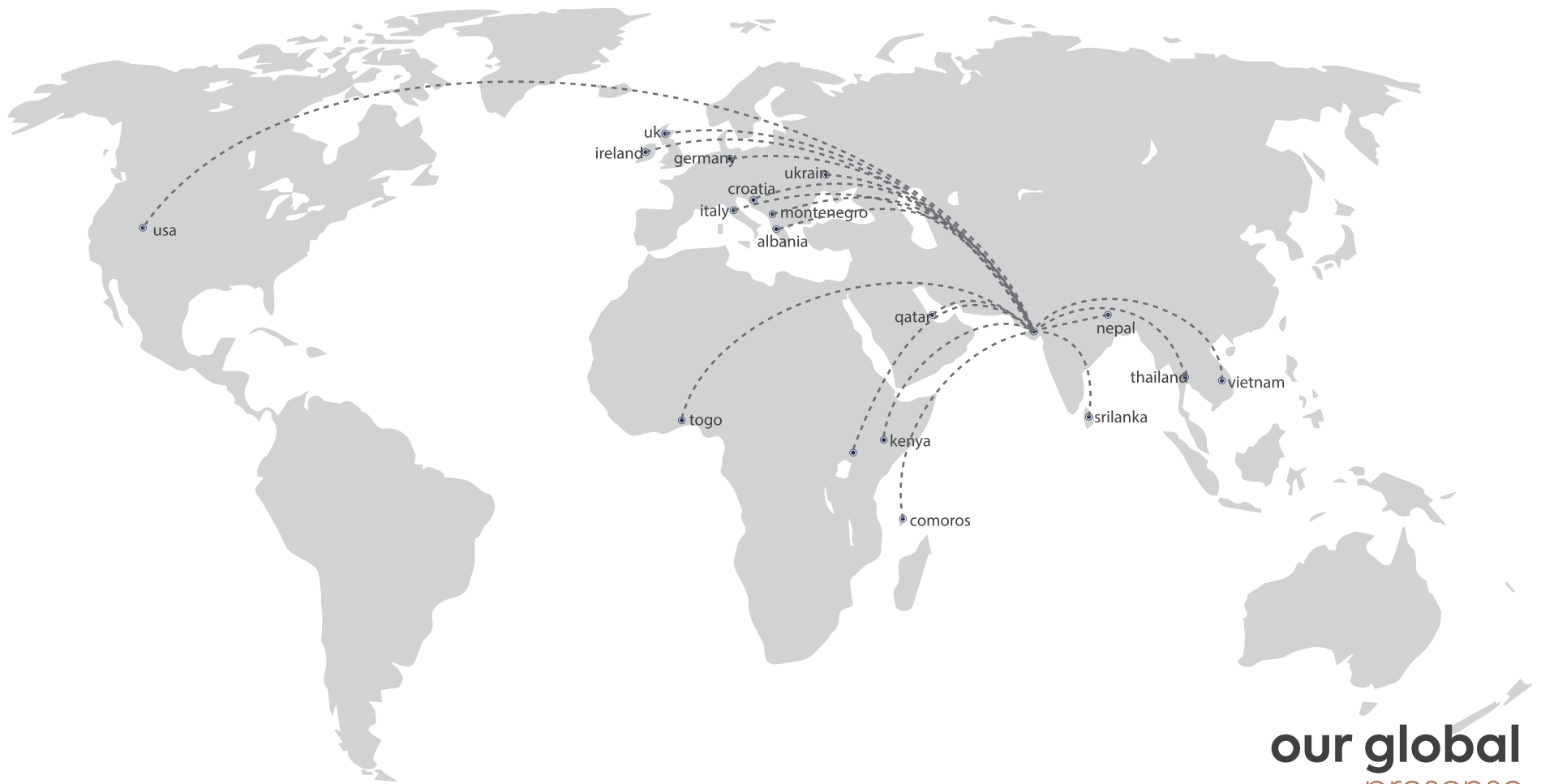


a manufacturing
hub of

- ❖ Vitrified Tiles
- ❖ Wall Tiles
- ❖ Engineered Quartz
- ❖ Sanitaryware



EVOLUTION ACROSS THE GLOBE



our global
presence

thank you
&
get in touch
with us

❖ **Registered Office**

129, Milan Avenue Park,
Ravapar Road, Morbi - 363641,
Gujarat - India.

❖ **Rajkot Office**

Office no. 914, The SPIRE,
150 ft. Ring Road, Rajkot - 360007,
Gujarat - India.

❖ **Head Office**

Shivam Enterprise
Lakhdirpur Road, 8A - National Highway,
Morbi - 363642, Gujarat - India.

❖ **UK Office**

31, Fernbrook Drive,
Harrow HA2 - 7EE,
United Kingdom

❖ **USA Office**

600 N Broad Street,
Suite 5 #3190,
Middletown, DE 197099.



www.evolutionceramic.com | +91 98257 75753 | atul@evolutionceramic.com

